

2010 QBS  
Request for Statement of Interest (SOI)  
Intersection of Plank Road at Burlington Road

The Kane County Division of Transportation is in need of professional services from a qualified engineering firm to provide Phase Two Engineering with some elements of a Phase I. The attached *Preliminary Scope of Services* provides in more detail anticipated items that are necessary as part of this project.

At this time the County anticipates starting this work in July of 2010 with a contract duration of 24 calendar months.

The Statement of Interest shall be submitted **VIA EMAIL** no later than 4:00 P.M. on **May 19, 2010** and should be addressed to Mr. Paul Holcomb, Chief of Design. Mr. Holcomb's email address is: [holcombpaul@co.kane.il.us](mailto:holcombpaul@co.kane.il.us).

For more information regarding the SOI, such as content and format of these items, please reference our QBS document found at <http://www.co.kane.il.us/dot/consultant.aspx> SOI's shall be submitted in PDF format (2 pages max) viewable with the latest version of Adobe reader. Verification of SOI's received be emailed to the consultant. If you do not receive this verification please contact Paul Holcomb at (630) 406-7333.

Short-listed firms will be posted on our website at <http://www.co.kane.il.us/dot/SOISummary.aspx> Click on the link labeled "Summary Table", then click project link.

**A Statement of Interest (SOI) received after the above noted deadline will not be used as part of our consultant selection process.**

## PRELIMINARY SCOPE OF SERVICES

### Intersection of Plank Road at Burlington Road

#### **Introduction**

It is proposed to eliminate the existing offset “T” intersections of Plank at Burlington Road by realigning the east approach of Plank Road to line up with the current west approach of Plank Road. We are therefore requesting Phase II engineering services for this proposed improvement.

Elements of a Phase I will also be requested. Traffic analysis including projections, intersection alternatives, an IDS, and traffic signal warrants will be performed. Other tasks may include an environmental survey, meetings with applicable stakeholders, Plat of Highways, and geotechnical investigations.

It is anticipated that final plans would include auxiliary left/ right turn lanes, improved drainage, possible traffic signals, a stormwater pollution prevention plan (SWPPP), landscaping, and new pavement markings. The plans will be supplemented with bid documents consisting of specifications, estimate of time required, and an Engineer’s Opinion of Probable Costs.

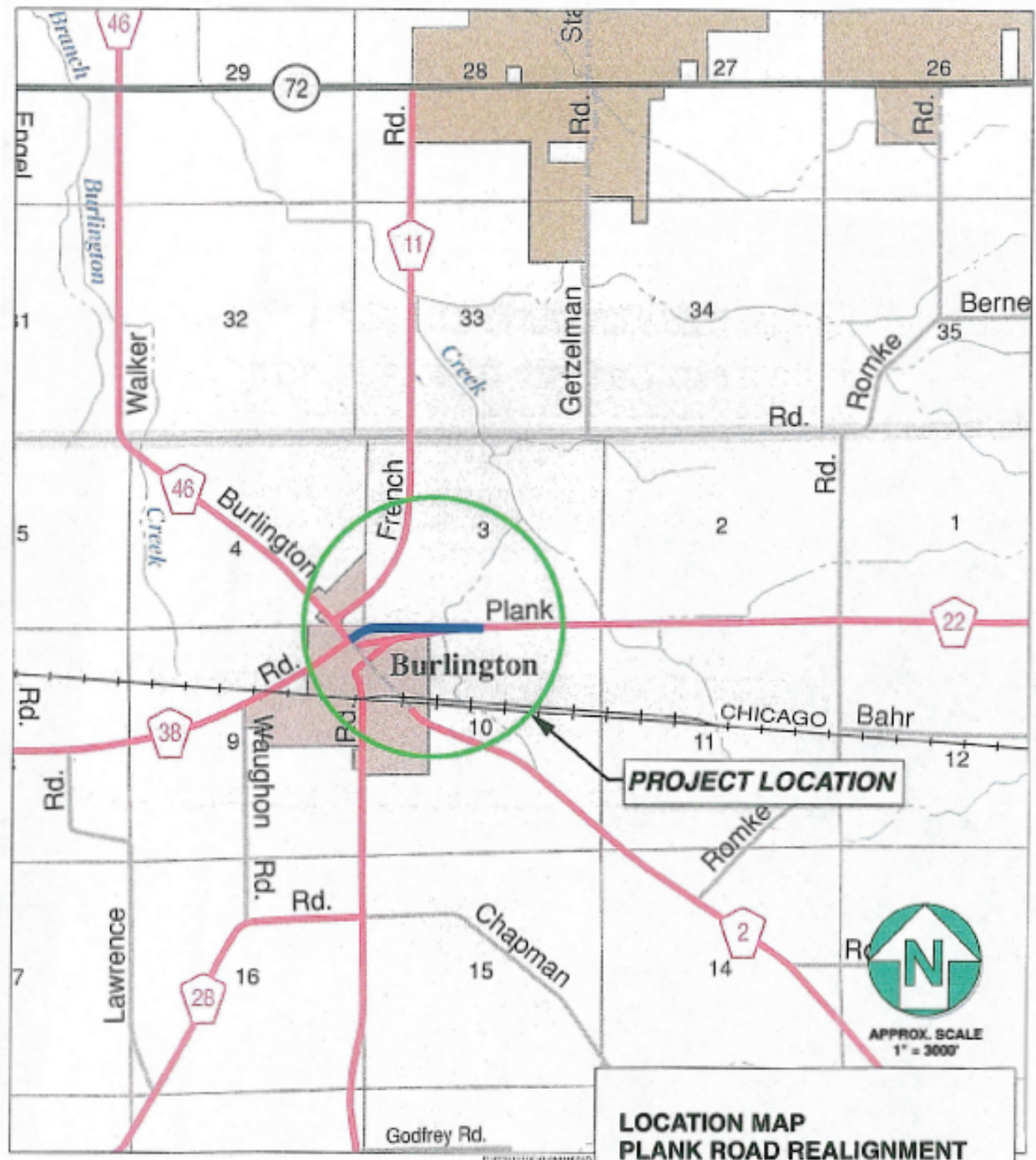
The project will be completed under the most current design guidelines in IDOT’s BLR manual and Traffic Signal Design Guidelines (latest editions). The consultant will also be required to certify that the design complies with the Kane County Stormwater Ordinance.

#### **Deliverables**

The consultant will make three major submittals (preliminary, pre-final and final) of plans, specifications and estimates to KDOT.

#### **Contact Information**

Any questions regarding the project or QBS or Consulting Selection Process should be directed to Paul Holcomb at 630-406-7333 or via email at [holcombpaul@co.kane.il.us](mailto:holcombpaul@co.kane.il.us).



**LOCATION MAP  
PLANK ROAD REALIGNMENT**